



**Timber beds at RHS Harlow Carr**



**Steel cages at RHS Wisley**



**Inspiring new product designs**

## The RHS & Harrod Horticultural – a winning combination!

Harrod Horticultural has built an enviable reputation of designing and producing some of the best crop protection and garden products that aid the growing of fruit and vegetables. It was therefore a major testament to the quality of the products when the RHS Wisley and RHS Harlow Carr garden venues requested some of the designs for use in their projects.

### Showcasing Designs

It's a mutually beneficial arrangement. The gardens gain new tools and structures to make their tasks easier and to progress their projects. Meanwhile Harrod Horticultural gets the type of invaluable feedback that enables the refining of designs which in turn keeps their products at the forefront of those that are on the market today.

Visit RHS Harlow Carr and you will find the standard steel cage design on display that has been heralded by the RHS Head of Gardens Creative Development, Matthew Wilson, who said: "I am very pleased with their **robust construction and design**...most

important of all **they protect the fruit**, ensuring a really good crop."

Equal praise for the **decorative steel fruit cage** has also come out of RHS Wisley. Four of these are placed together to provide a major feature in the Fruit Enthusiasts Garden and are used to protect two plum trees (varieties Opal and Victoria) and two gages (Cambridge and Imperial). Jim Arbury, Fruit Superintendent at the site, commented: "the decorative cages have a good height, are **well-made** and robust yet **attractive**, and I particularly like the matt black finish to the steel".

Also at the RHS Wisley Gardens are the **ready-made timber raised bed kits**, available in all shapes, sizes and heights. "The highest of these beds is suitable for wheelchair users, or for anyone who prefers not to bend down...which is probably most of us!" pointed out Jim Gardiner, the Curator at the venue.

Since working with **RHS Harlow Carr** and **RHS Wisley**, relationships between the RHS and Harrod Horticultural have extended to other UK garden venues too. Both **RHS Hyde Hall** and **RHS Rosemoor** use compostumblers that have been supplied as well as crop protection

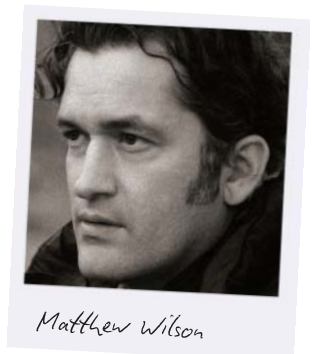
hoops, Sneeboer tools, EarthBox containers and plant supports.

### A Lasting Relationship

The working relationship between the two organisations has been effective and both look forward to its continuation. Managing Director Stephanie Harrod comments "There is no doubt that we benefit greatly from the vast and experienced knowledge of fruit and vegetable gardeners at the RHS. It makes sense for us to use their know-how when we put together new designs because it results in **well thought out constructions** that provide the perfect solution for domestic organic gardeners. The gardens are also stunning settings for us to showcase our products and suitably reflect the grandeur put into the designs".

*For full listings of Harrod Horticultural products featured at all RHS gardens, visit [www.harrodhorticultural.com](http://www.harrodhorticultural.com) and click "Show Gardens" on the home page.*

**Matthew Wilson**  
RHS Head of  
Gardens Creative  
Development  
– impressed with  
our cages.



Matthew Wilson

**For more information please contact Victoria Read, Harrod Horticultural**

**Tel: 0845 218 5301  
Email: [victoria@harrod.uk.com](mailto:victoria@harrod.uk.com)**